

Electronic Damper Actuator Non-spring Return

Easily Replaces:

- Belimo LM Series



Indoor
Environmental
Quality

44 lb.-in. Torque

24 Vac, Floating Control
0 to 10 Vdc, Modulating Control



GDE Series Non-spring Return
Electronic Damper Actuator.

Description

The OpenAir GDE Series Direct-coupled 24 Vac Non-spring Return Rotary Electronic Actuator is designed for 0 to 10 Vdc or floating control of building HVAC dampers.

Features

- Compact design
- Easy-to-see position indicator
- 0 to 10 V or floating models
- Self-adapting capability for maximum flexibility in damper positioning
- UL, cUL, CE listed
- Quiet, low-power operation
- Rated NEMA 2
- Assembled in the U.S.A.
- Manual override
- Modulating actuators contain built-in feedback
- N Versions designed for under floor installation (pluggable cable connections)

Options

- Independently adjustable dual auxiliary switches
- Adjustable start/span
- Standard or plenum cable
- Available in bulk packs for additional savings
- Potentiometer on floating control

Applications

The OpenAir GDE Series Damper Actuators are used in Constant or Variable Air Volume installations for the control requiring up to 44 lb.-in. (5 Nm) torque.

Models are available with either a universal cable for wiring in conduit or a plenum-rated cable for applications where conduit is not required.

B-19

Damper Actuators



Siemens
Product Guard
PLUS 3 Warranty

GDE Series Specifications

Operating Voltage24 Vac
Frequency50/60 Hz
Power Consumption2 to 3 VA
Input signal (8–2)
 Voltage-Input 0 to 10 Vdc
 Input Resistance100K Ohms
Position Output Signal (9–2)
 Voltage-Output 0 to 10 Vdc
 Max. Output Current 1 mA
Equipment Rating for Operating Voltage, Input Signal, and Position Output SignalClass 2
Control Signal Adjustment
 Offset (Start Point) Between 0 to 5 Vdc
 Factory Setting 0 V
 Span Between 2 to 10 Vdc
Dual Auxiliary Switch
 Contact Rating 4 A resistive, 2 A General Purpose
 Voltage24 Vac
 Switch Range
 Switch A 0 to 90° with 5° intervals
 Recommended Range Usage 0 to 45°
 Factory Setting 5°
 Switch B 0 to 90° with 5° intervals
 Recommended Range Usage 45 to 90°
 Factory Setting 85°
 Switching Hysteresis 3°
Position Feedback
 GDE132.1P0 to 1000 Ohm <10 mA

Function
 Torque 44 lb.-in.(5 Nm)
 at 50 Hz 108 sec.
 at 60 Hz 90 sec.
 Nominal Angle of Rotation 90°
 Max. Angular Rotation 95°
Shaft Size 3/8 to 5/8-in. (8 to 16 mm) Dia. ●
 1/4 to 1/2-in. (6 to 13 mm) Sq. ■
Min. Shaft Length 3/4-in. (20 mm)
Housing Enclosure NEMA Type 2
Material Plenum Rated Rugged Plastic
Temperature
 Operation -25 to +130°F (-32 to +55°C)
 Storage and Transport -25 to +140°F (-30 to +60°C)
Humidity 95% RH, non-condensing
Agency Approvals UL873
 cUL C22.2 No. 24-93
 CE
Pre-cabled Connection AWG 18
Cable Length 3 ft. (0.9 m)
Dimensions 5.4" H x 2.6" W x 2.3" D
 (137 mm H x 68 mm W x 60 mm D)
Shipping Weight 1.06 lb. (0.45 kg)

B-20

Damper Actuators

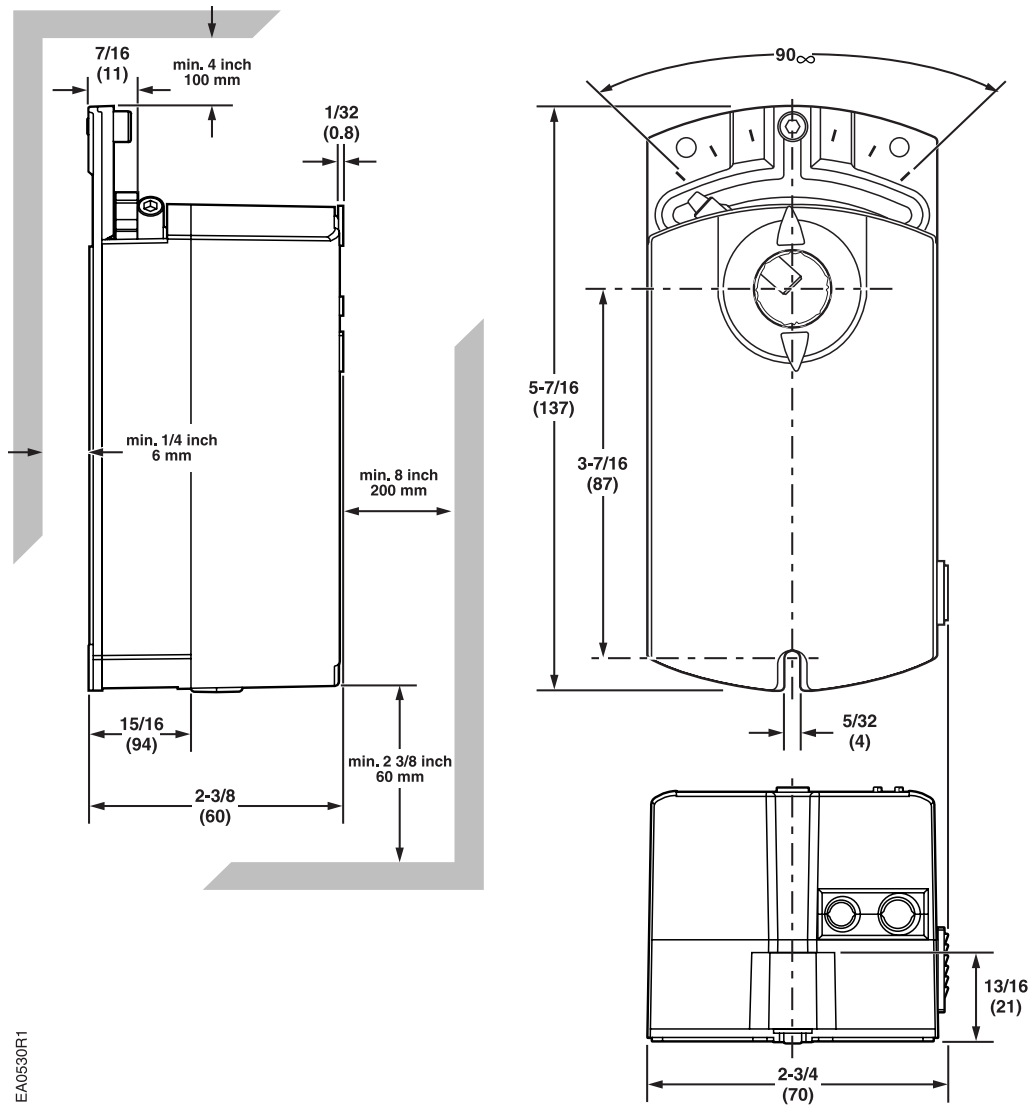
GDE Series Product Ordering

Input Signal	Part No.					Pre-Cabled	No Cables
	Standard	With Potentiometer	Slope/Offset Adjustable	Dual Aux. Switches & Slope/Offset Adjustable	Dual Aux. Switches Only		
0 to 10 Vdc	GDE161.1P	—	GDE163.1P	GDE164.1P	GDE166.1P	Plenum	—
	GDE161.1P/B (24 pk)	—	—	—	—	6 ft Plenum	—
	GDE161.1Q	—	—	—	—	—	Post Header AMP
	GDE161.1N	—	—	—	—	—	Terminal Strip
	GDE161.1N/B (24 pk)	—	—	—	—	—	—
	GDE161.1T	—	—	—	—	—	—
Floating	GDE131.1U	—	—	—	—	Standard	—
	GDE131.1U/B (24 pk)	—	—	—	—	—	—
	GDE131.1P	GDE132.1P	—	—	GDE136.1P	Plenum	—
	GDE131.1P/B (24 pk)	—	—	—	—	6 ft Plenum	—
	GDE131.1Q	—	—	—	—	—	Post Header AMP
	GDE131.1Q/B (12 pk)	—	—	—	—	—	Terminal Strip
	GDE131.1N	—	—	—	—	—	—
	GDE131.1N/B (24 pk)	—	—	—	—	—	—
GDE131.1T	—	—	—	—	—	—	
GDE131.1T/B (24 pk)	—	—	—	—	—	—	

Cables compatible with the GDE131.1N and GDE161.1N sold separately on page B-53.

GDE Series Dimensions

GDE/GLB Series OpenAir Electronic Damper Actuator



EA0530R1

Dimensions shown in inches (mm).

B-21

Damper Actuators

Accessories & Service Kits

B-49